



CLOSED SYSTEM

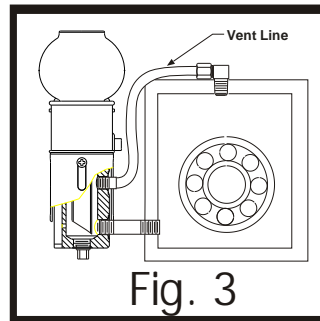
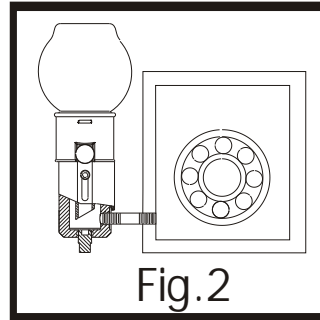
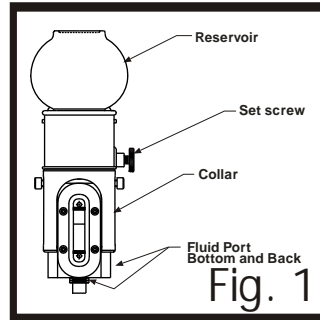
With Sight Gauge / Constant Level Oiler

Read Instructions Before Installing

- DO remove the reservoir from the CLOSED SYSTEM during installation and removal.
- DO use pipe thread sealant on all thread connections.
- DO copy these instructions and distribute to ALL persons responsible in the maintenance of the CLOSED SYSTEM.
- DO NOT install or remove the CLOSED SYSTEM with or by use of the reservoir assembly.
- DO NOT use the CLOSED SYSTEM for stepping, standing, or heavy loading as these actions could cause a change in oil level settings and may cause leaks.

To Install:

1. Loosen set screw on reservoir assembly. Remove reservoir and put aside (fig. 1).
2. Verify that there are no contaminants or noticeable particles in the CLOSED SYSTEM or bearing housing.
3. Tighten supplied plug in side or bottom fluid port, sealant is not necessary on plug. If using side fluid port to connect CLOSED SYSTEM to the bearing housing, tighten plug in bottom fluid port. If using bottom fluid port to connect CLOSED SYSTEM to the bearing housing, tighten plug in side fluid port (fig. 1).
4. Apply pipe thread sealant to both ends of a 1/4" NPT male nipple. Tighten nipple in remaining fluid port and bearing housing. If bottom fluid port is remaining, an elbow may need to be used. The CLOSED SYSTEM should be parallel to the bearing housing in a vertical position (fig. 2).
5. Apply pipe thread sealant to a 1/8"NPT x 1/4"O.D. male connector and tighten it into the vent port on the CLOSED SYSTEM.
6. Apply pipe thread sealant to a 1/8"NPT x 1/4"O.D. male connector and tighten it into the vent port on the bearing housing.
7. Connect a section of 1/4"O.D. copper or nylon tubing to the 1/8" NPT connectors. This will serve as the vent line (fig. 3).
8. Adjust the collar to the desired fluid level. Bottom of collar indicates fluid level (see back side for dimensions from centerline of side port to bottom of collar.)
9. Fill reservoir until full.
10. Place thumb over reservoir spout, invert, and insert the spout into the lower housing until upper casting bottoms out on the collar.
11. Oil will drain out of the reservoir and into bearing housing. Repeat steps 10 and 11 until oil stops flowing.
12. When oil stops flowing secure set screw.



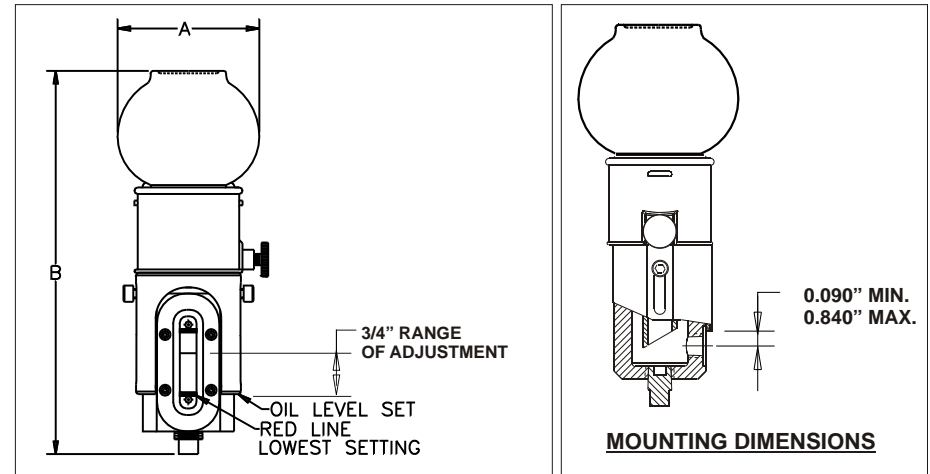
CLOSED SYSTEM

With Sight Gauge / Constant Level Oiler

Product Ordering:

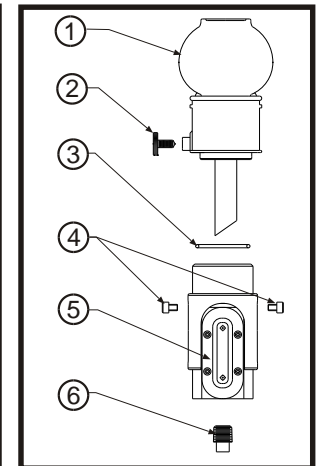
MODEL NO.	CAPACITY	DIM A	DIM B MIN.	DIM B MAX.	NPT*
30203	4 OZ.	2-11/16	7-1/16	7-13/16	1/4"
30205	8 OZ.	3-3/16	8-00	8-3/4	1/4"
30210	16 OZ.	4-1/8	8-7/8	9-5/8	1/4"

*-SIDE AND BOTTOM PORTS. VENT LINE IS 1/8" NPT.



Replacement Parts:

ITEM #	DESCRIPTION	CATALOG #
1	4 Ounce Reservoir Assy.	26113R
	8 Ounce Reservoir Assy.	26115R
	16 Ounce Reservoir Assy	26120R
2	Set Screw	10267R
3	O-Ring 1.375" ID x .062 CS	11893R
4	Hex Socket Screw	10262R
5	Sight Gauge	26121R
6	1/4" Square Plug	10321R



See Reverse Side For Specific Instructions On Installing The Closed System

TRICO MFG. CORP. 1235 HICKORY STREET, PEWAUKEE, WI 53072 TEL. (262) 691-9471 FAX (262) 691-2576
www.tricomfg.com